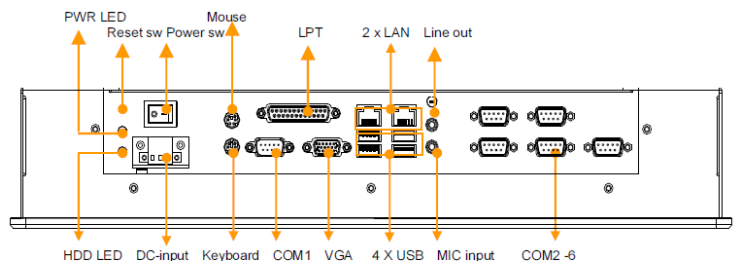


Model: **EIPC-J1900-17** (without Touch screen) **EIPC-J1900-17T** (with Touch screen)

17" Marine Suitable Intel Celeron J1900 Panel PC - 6 x COM; IP65 front protection; Optional - Touch Screen & WIFI



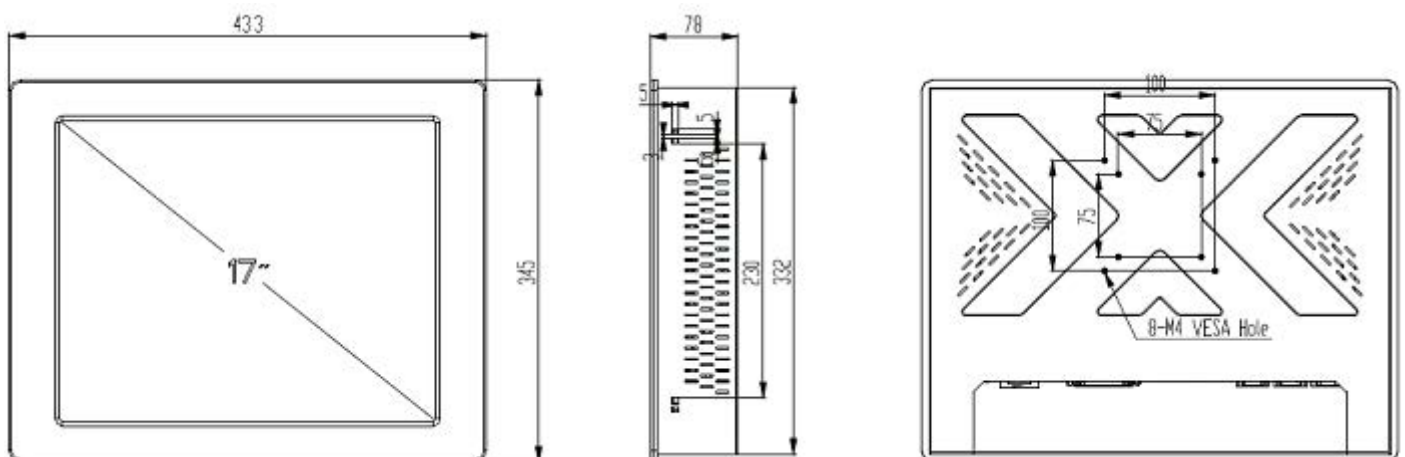
Main Feature

- LED Panel - Higher Brightness; Longer Life Span; Better Viewing Angle; Less Power Consumption
- 17" SXGA LED Panel support 1280×1024 pixels
- Intel Celeron J1900 (2.0GHz, Quad Core, 2MB Cache) Processor
- Rugged construction design
- Front 6mm Aluminum bezel - NEMA4 / IP 65 compliant
- 6 x COM (5 x RS232 and 1 x RS422/485)
- (Optional - Touch Screen) Front hardness glass protect screen
- (Optional - WIFI) MINI PCI-E WIFI Module with Antenna
- Panel (Flush) mounting with clip
- Meet standard VESA hole (75 & 100 mm), support desk top stand / wall mount / swing arm mounting

| Specification | |
|---------------|--|
| Product Model | EIPC-J1900-17 / EIPC-J1900-17T |
| CPU | Intel Celeron J1900 (2.0GHz, Quad Core, 2MB Cache, up to 2.41 GHz w/ burst frequency enabled) |
| Chipset | Intel® SOC integrated |
| Memory | 1 x DDR3L SO-DIMM Socket up to 8GB |
| Storage | Space for 1 x 2.5" Drive Bay |
| Display | Display Type : 17" SXGA <u>LED Panel</u> Resolution : 1280 x 1024 Luminance : 300 cd/m2 View Angel : 160° (H), 160° (V) |
| Audio | Realtek ® ALC662, 5.1 channel surround audio |

| | |
|------------------------------|--|
| LAN | 2 x Realtek ® RL8111x (Gigabit) 10/100/1000Ethernet |
| USB port | 4 x USB 2.0 |
| VGA port | Intel HD Display output |
| Expansive interface | 1 x Mini PCI-E |
| Back panel I/O port | 2 x PS2 for KB/Mouse; 2 x RJ45; 4 x USB 2.0; 1 x VGA ; 1 x Lin-in / Lin-out; 1 x LPT; 6 x COM; 1 x HDD/PWR LED; 1 x Power / Reset Switch; 1 x PWR-In 3 PIN Terminal Block |
| Supporting OS | DOS; Windows 7/8.1/10; Linux |
| Touch Screen (optional) | Internal USB interface controller - Resistive Touch Type: Analog resistive type : 25VDC ≥ 20MΩ Resolution: continuous Light transmission: 80% or more Power consumption:<5V @1mA Surface hardness : 3H Operating force : ≤100g Life expectancy : 35 Million |
| Wireless LAN (optional) | MINI PCI-E WIFI Module with Antenna |
| Power Supply | 12VDC input with 3 pin termination block |
| Construction | Heavy duty steel and aluminum front panel |
| Environment | Operating temperature: -5 °C to 60 °C Relative humidity: 10% to 90%non-condensing Vibration: 17 to 500HZ 1G PTP; Shock: 1G /peak(11m sec) |
| Compliance | CE; FCC; ROHS |
| Dimension W x H x D (mm) | 433 x 345 x 78 |
| Ordering Information: | |
| EIPC-J1900-17 | 17" Marine Suitable Panel PC - Intel Celeron J1900, with 100-240VAC to 12VDC adapter |
| EIPC-J1900-17T | 17" Marine Suitable Panel PC - Intel Celeron J1900, with Touch Screen, with 100-240VAC to 12VDC adapter |
| <u>Optional</u> - RAM | 4 to 8GB DDR3L SO-DIMM RAM |
| <u>Optional</u> - SSD / HDD | 32 GB to 1TB SSD / 500GB to 1TB 2.5" SATA HDD |
| <u>Optional</u> - WIFI | MINI PCI-E WIFI Module with Antenna |
| <u>Optional</u> - OS | Windows 7/8.1/10 Professional |

Structure Diagram



CUT OUT DIMENSION (420x334mm) UNIT:mm